



Wednesday, 28th August – Sunday, 1st September 2013

**Hosted by
Düsseldorfer Yachtclub e.V., Germany**

**In cooperation with
Royal Yacht Club Hollandia, The Netherlands**

**Location
International Regatta Center Medemblik**
*Vooroever 1, 1671 SG Medemblik
The Netherlands*



RULES

- 1.1 The regatta will be governed by the 'rules' as defined in *The Racing Rules of Sailing* (RRS).
- 1.2 No national prescriptions will apply.
- 1.3 All competitors shall wear personal flotation devices while afloat, except for brief periods while changing or adjusting clothing or personal equipment. Wet suits and dry suits are not personal flotation devices. This changes RRS 40 and the Part 4 preamble.
- 1.4 If there is a conflict between languages, the English text will take precedence.

2 NOTICES TO COMPETITORS

Notices to competitors will be posted on the official notice board located near the regatta office.

3 CHANGES TO SAILING INSTRUCTIONS

Any change to the sailing instructions will be posted before 08:00 hrs on the day it will take effect, except that any change to the schedule of races will be posted within the protest time or by 20:00 hrs on the day before it will take effect, whatever is later.

4 SIGNALS MADE ASHORE

- 4.1 Signals made ashore will be displayed at the signalling mast near the regatta office.
- 4.2 When flag AP is displayed ashore, '1 minute' is replaced with 'not less than 60 minutes' in the race signal AP.

5 SCHEDULE OF RACES

- 5.1 Dates and number of races see Notice of Race.
- 5.2 The maximum number of races per day is three.
- 5.3 Start of 1st Race: Thursday 29th August 2013 at 11:00 hrs.
Following races will be started a.s.a.p.
- 5.4 When flag "L" is displayed on the finishing vessel the warning signal for the next race will be made as soon as practicable.
- 5.5 The time for the 1st warning signal for the following day will be posted on the official notice board within the protest time or before 20:00 hrs, whatever is later.
- 5.6 On the last day of the Championship (Sunday, 1st September 2013) no warning signal will be made after 14:00 hrs.

6 CLASS FLAGS

The class flag will be flag "F".

7 RACING AREA

Attachment A shows the approximate location of the racing areas.

8 THE COURSES

- 8.1 The diagrams in Attachment B show the courses, including the approximate angles between legs, the order in which marks are to be passed, and the side on which each mark is to be left.
- 8.2 No later than the warning signal, the race committee may display the course and the approximate compass bearing of the first leg. The course to be sailed will be shown by the numeral pennants.

9 MARKS

- 9.1 Marks to be used are described in Attachment B.
- 9.2 A race committee boat signalling a change of a leg of the course is a mark as provided in instruction 12.2.

10 THE START

- 10.1 Races will be started according to RRS 26 with the warning signal made five (5) minutes before the starting signal.
- 10.2 The Race Committee will display an orange flag for at least four (4) minutes prior to the warning signal.
- 10.3 Races will be started either by a gate start or a fixed line start. The Race Committee will try to use a gate start whenever possible.

10.4 Gate Start

- 10.4.1 When a gate start is used, the Race Committee will display flag "G" on the Race Committee signal boat no later than the warning signal.
- 10.4.2 The starting line (except for the Pathfinder) will be between the port end starting mark and the centre of the stern of the Gate Launch, displaying flag "G".
- 10.4.3 Signals will be displayed from the Race Committee signal boat near the port end starting mark and may be duplicated on the Gate Launch.
- 10.4.4 The Pathfinder for the first race will be appointed by the Race Committee. The Pathfinder for subsequent races will be the boat that finished tenth (10th) in the preceding race. When this boat is unable to race, or has been Pathfinder previously in the event, the Pathfinder will be the boat that finished eleventh (11th) in the preceding race, and so on.
- 10.4.5 The sail number of the Pathfinder will be displayed on the Race Committee signal boat prior to the warning signal.
- 10.4.6 No later than the warning signal, the Race Committee will signal the length of the time between the starting signal and when the Gate Launch will stop at the starboard end of the starting line.
- 10.4.7 Prior to the warning signal, the Pathfinder shall report to the Gate Launch, also displaying flag "G" and positioned near the Race Committee signal boat. The Pathfinder shall follow the Race Committee's instructions. If the Pathfinder fails to comply with this instruction, she may be disqualified without a hearing and shall be ineligible for any restart of that race. If the race is restarted on the same day SI 10.4.15 will apply.
- 10.4.8 Within 10 seconds *after* the starting signal being made, the Pathfinder shall pass the port-end starting mark on a close-hauled port tack course. The Gate Launch will keep station close astern of the starboard quarter of the Pathfinder. The Gate Launch Guard Boat may keep station on the starboard side of the Pathfinder. The starting line will be open and boats may start once the Gate Launch has cleared the port end starting mark, regardless of the starting signal. RRS 29.2 (Individual Recall) shall not apply.
- 10.4.9 The Pathfinder shall sail her close-hauled course until released by a whistle or sound signal from the Gate Launch, after which she ceases to be a starting mark and may continue or tack onto starboard tack.
- 10.4.10 After the release of the Pathfinder the Gate Launch will maintain her course and speed until the time signalled by the Race Committee has elapsed. She will then stop, lower flag "G" half way and make a long sound signal. One minute after the Gate Launch stopped, the Race Committee will signal the closure of the starting line by lowering flag "G" on both the Gate Launch and the Race Committee signal boat and make a short sound signal. Any boat starting after lowering flag "G" will be scored DNS without a hearing.

- 10.4.11** All boats except the Pathfinder shall start on starboard tack.
- 10.4.12** A boat not having started correctly and which is on the port side of the extension of the Gate Launch's course between the starting signal and the closure of the starting line shall not cross the starting line from the course side.
- 10.4.13** A boat that touches the Gate Launch or the Gate Launch Guard Boat after the preparatory signal shall take a one-turn penalty according to RRS 44.2.
- 10.4.14** After the preparatory signal a boat shall be disqualified without a hearing and shall be ineligible for any restarts of that race if while approaching the line to start she:
- (1) causes the Pathfinder or Gate Launch or Gate Launch Guard Boat to alter course or speed, or
 - (2) touches the Pathfinder, or
 - (3) passes between or attempts to pass between the Pathfinder and the Gate Launch and/or Gate Launch Guard Boat.
- If the race is restarted on the same day SI 10.4.15 will apply.
- 10.4.15** If a boat has been disqualified according to SI 10.4.7 or SI 10.4.14 and the race is restarted on the same day, her sail number shall be displayed on the Race Committee signal boat for at least three (3) minutes prior to the new warning signal. A boat whose number has been displayed shall leave the starting area before the next warning signal; however, a boat breaking this rule may participate in the restarted race providing she advises the Race Committee prior to the warning signal that she intends to protest another boat and/or requests a redress in connection with the incident. If either her protest is dismissed or her request for redress is denied, she shall be scored DNE for the race in question. This changes RRS 36, 62.2, 63.1 and Appendix A5.
- 10.4.16** The Race Committee may abandon a start in case of great disadvantage to some boats e.g. through the wind conditions or an interference with the Pathfinder/Gate Launch. Failure to comply with this instruction is no grounds for redress.

10.5 Line Start

- 10.5.1** When a line start is used, the Race Committee will display flag "E" on the Race Committee signal boat no later than the warning signal.
- 10.5.2** The starting line will be between staffs displaying an orange flag on the Race Committee signal boat and on the port-end starting mark.
- 10.5.3** Near the starboard-end of the starting line an Inner Limiting mark (ILM) may be laid, which shall be left to starboard when starting. The Mark ILM shall also be a starting mark for the purpose of Section C and RRS 31.
- 10.5.4** A boat starting later than five (5) minutes after her starting signal will be scored DNS without a hearing. This changes Rule A4 and A5.

11 CHANGE OF THE NEXT LEG OF THE COURSE

- 11.1** To change the next leg of the course, the Race Committee will move the original mark (or move the finishing line) to a new position.
- 11.2** Except at a gate, boats shall pass between the Race Committee boat signalling the change of the next leg and the nearby mark, leaving the mark to port and the race committee boat to starboard. This changes rule 28.1.
- 11.3** If the gate is replaced by only one mark, this mark shall be left to port.

12 THE FINISH

The finishing line will be between a staff displaying a blue flag on a Race Committee boat (Starboard end) and a dan buoy with a blue flag (Port end).

13 PENALTY SYSTEM

13.1 Appendix P will apply.

13.2 RRS 42.3(c) is replaced by Class rule B13 as follows:

Except on a beat to windward, when surfing (rapidly accelerating down the face of a wave) or planing is possible, the boat's crew may pull the sheet and guy controlling any sail in order to initiate or maintain surfing or planing, but not more than three (3) repeated pulls and releases of the sail may be made for each wave or gust of wind.

14 TIME LIMITS AND TARGET TIMES

14.1 The target time is 60 minutes and the time limit is 90 minutes. The time limit for the first boat to reach the first mark is 30 minutes.

14.2 If no boat has reached the first mark or has sailed the course and finished within the time limits stated above the race shall be abandoned.

14.3 Failure to meet the target time will not be grounds for redress. This changes RRS 62.1(a).

14.4 Boats failing to finish within 20 minutes after the first boat sails the course and finishes will be scored DNF without a hearing. This changes rules 35, A4 and A5.

15 PROTESTS AND REQUESTS FOR REDRESS

15.1 Protest forms are available at the regatta office, located at the ISCM. Protests and requests for redress or reopening shall be delivered there within the appropriate time limit.

15.2 The protest time limit is 60 minutes after the last boat of the class has finished the last race of the day or after abandoning or postponing this race to the next day.

15.3 Notices of the race committee or jury will be posted to inform boats under RRS 61.1(b).

15.4 Notices will be posted not later than 30 minutes after the protest time limit to inform parties and witnesses of the beginning, the order and the place of protest hearings. Hearings will be held in the protest room, located at the regatta office, beginning as soon as possible.

15.5 Parties and witnesses shall stand by in time in the lobby of the regatta office.

15.6 A list of boats that have been penalised according to appendix P for infringing rule 42 will be posted before protest time limit.

15.7 Breaches of instructions 10.4, 18, 22, 23, and 24 and RRS 55 will not be ground for a protest by a boat. This changes RRS 60.1. Penalties for these breaches can be less than a DSQ at the discretion of the jury.

15.8 On the last day of racing a request to re-open a hearing shall be delivered:

- (1) within the protest time limit if the requesting party was informed of the decision on the previous day;
- (2) no later than 30 minutes after the requesting party was informed of the decision on that day.

This changes RRS 66.

15.9 On the last scheduled day of racing a request for redress based on a jury decision shall be delivered no later than 30 minutes after the decision was posted. This changes RRS 62.2.

16 SCORING

- 16.1** Three (3) races shall be completed to constitute a series.
- 16.2** When only four (4) races have been completed, a boat's series score will be the total of her race scores.
- 16.3** When five (5) or more races have been completed, a boat's series score will be the total of her race scores excluding her worst score.

17 SAFETY REGULATIONS

- 17.1** A member of each crew has to sign out personally before leaving the harbour for the races and sign in within the protest time limit when they return ashore. Check-out / check-in lists will be available at the regatta office.
- 17.2** A boat that retires from a race shall notify the Race Committee as soon as possible.
- 17.3** If any one of the race signals AP over A, or AP over H, N over A or N over H is made on a Race Committee boat, all boats shall return to the harbour immediately.

18 REPLACEMENT OF CREW OR EQUIPMENT

- 18.1** Substitution of damaged or lost equipment is only allowed with approval of the Race Committee. Requests for substitution shall be made to the committee at the first reasonable opportunity.
- 18.2** Crew changes after the first race are only possible with the approval of the jury.

19 EQUIPMENT AND MEASUREMENT CHECKS

- 19.1** Each boat has to present a valid measurement certificate at registration.
- 19.2** Each boat is allowed to measure in two sets of sails, one set of spares and one set of foils as stated in the 505 class rules.
- 19.3** A boat or equipment may be inspected at any time for compliance with the class rules and sailing instructions. On the water, a boat can be instructed by a Race Committee equipment inspector or measurer to proceed immediately to a designated area for inspection.

20 OFFICIAL BOATS

Official boats are marked as follows:

- (1) Race Committee boats will fly a white flag with 'RC';
- (2) Orange rigid inflatable boats of the RC are marked 'Rescue' on both sides of the hull and carry a blue outboard cover with the RYCH insignia;
- (3) Jury boats will fly a yellow flag with 'Jury' or 'IJ'.

21 SUPPORT BOATS

- 21.1** All support boats shall register with the Organizing Authority before the first race of the regatta, stating the name of all persons aboard and the sail number of all boats they are supporting.
- 21.2** Support boats shall be marked with The National Flag or the three letter code of the country they represent. The minimum height for the letters shall be 200 mm.
- 21.3** Team leaders, coaches and other support personnel shall stay at least 100 metres outside areas where boats are racing from the time of the preparatory signal for the start until all boats have finished or until the race committee signals a postponement, general recall or abandonment.
- 21.4** Support and jury boats are required to monitor the safety radio frequency at all times and shall be required to undertake safety duties at the direction of the Race Officer.

22 PRESS BOATS

22.1 The Organizing Authority may appoint one or more Press Boats, which will be allowed within the race course. The position of these boats shall not be grounds for redress.

22.2 Press boats will display a respective flag or other identification symbol.

23 BERTHING

Boats shall be kept in the assigned area in the dinghy park and shall maintain there for the duration of the event unless given permission by the jury to leave the dinghy park e.g. for repairs.

24 RIGHT TO USE NAME AND LIKENESS

By participating in the European Championship a competitor automatically grants to the organizing authority and its sponsors the right in perpetuity to make, use and show, from time to time at their discretion, any motion and non-motion pictures and live, taped or filmed television and other reproductions of him or her during the period of the competition, without compensation.

25 RADIO COMMUNICATION

Except in an emergency, a boat shall neither make radio transmissions while racing nor receive radio communications. This restriction also applies to mobile telephones.

26 PRIZES

See Notice of Race.

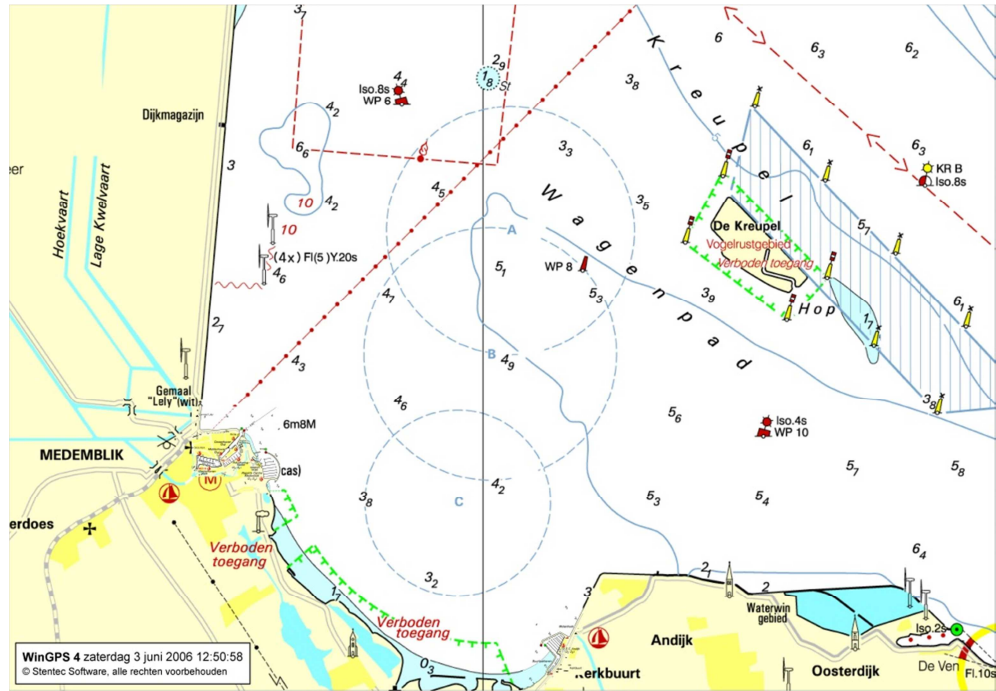
27 DISCLAIMER OF LIABILITY

Competitors participate in the regatta entirely at their own risk. See RRS 4, Decision to Race. The Organizing Authority will not accept any liability for material damage or personal injury or death sustained in conjunction with or prior to, during, or after the event.

28 INSURANCE

Each participating boat shall be insured with valid third-party liability insurance with a minimum cover of € 1.5 million per incident or the equivalent. A copy of the current insurance certificate shall be available to be shown prior to the start of the 1st race.

ATTACHMENT A Racing Areas



ATTACHMENT B Marks & Courses

Marks:

Port-end starting mark (gate & line start)	a dan buoy with an orange flag
Starboard-end starting mark (line start)	a staff or mast with an orange flag on the RC Signal boat
Inner limit mark (line start)	a dan buoy with a red flag

Marks 1, 1a orange inflatable cubical shapes

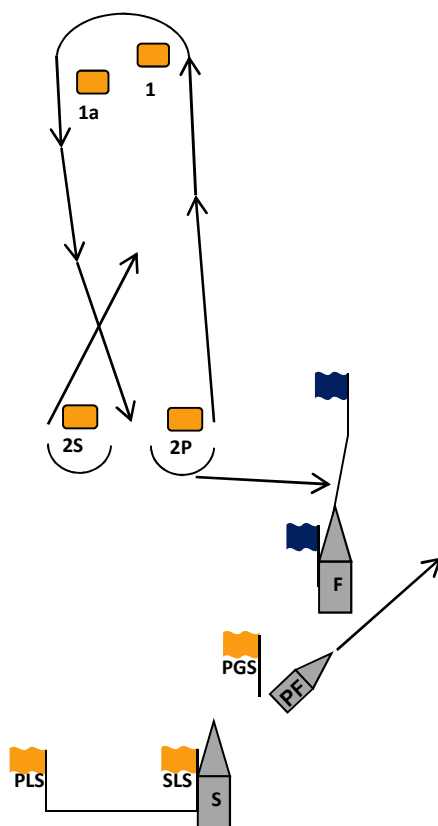
Gate marks 2S and 2P orange inflatable cubical shapes

Note: the inflatable shapes are not numbered

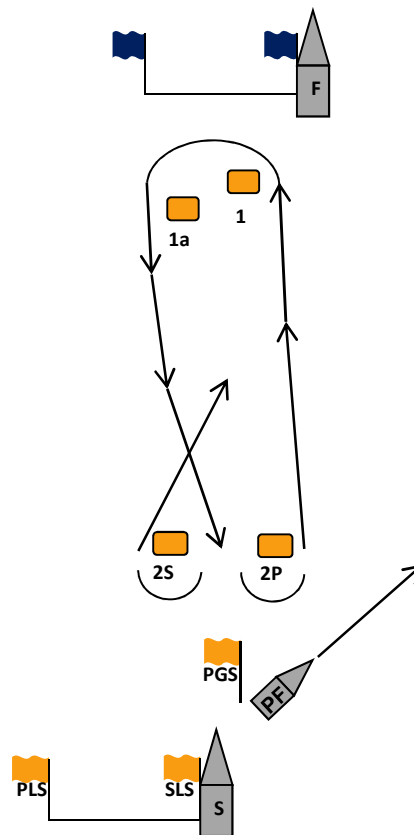
Port-end finishing mark a dan buoy with a blue flag

Starboard-end finishing mark a staff or mast with a blue flag on the RC boat

Courses 1



Courses 2



Course

- 1 1 Start – 1 – 1a – 2P – Finish (reach)
- 1 2 Start – 1 – 1a – 2S/2P – 1 – 1a – 2P – Finish (reach)
- 1 3 Start – 1 – 1a – 2S/2P – 1 – 1a – 2S/2P – 1 – 1a – 2P – Finish (reach)
- 2 2 Start – 1 – 1a – 2S/2P – Finish (upwind)
- 2 3 Start – 1 – 1a – 2S/2P – 1 – 1a – 2S/2P – Finish (upwind)
- 2 4 Start – 1 – 1a – 2S/2P – 1 – 1a – 2S/2P – 1 – 1a – 2S/2P – Finish (upwind)